



GENERAL MOTORS

New Die Tryout Concept – Surface Inspection

Motivation

In order to reduce die tryout time, a new concept of tryout monitoring is being developed. In that context it is important to identify the typical defects and correlate with measurements of KPI's during the stamping process in order to assist in the corrections and adjustments in the die tooling.

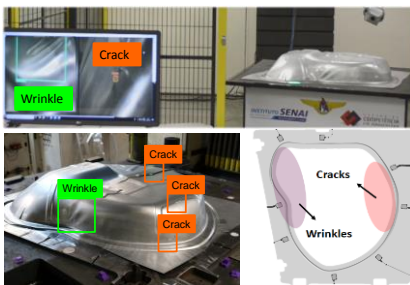
Objective

Development of a surface inspection system to identify typical stamping defects and correlate to KPI's measurements.

Approach

Development of a computer vision system with artificial intelligence to identify the defects in the parts during tryout. Evaluation and validation of the inspection system in relevant environment. Integration with KPI's measurements.

Tryout Phase



Surface Inspection



Die Adjustment

Final Part

