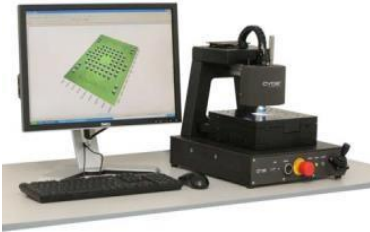




GENERAL MOTORS



Surface defects assessment

Motivation

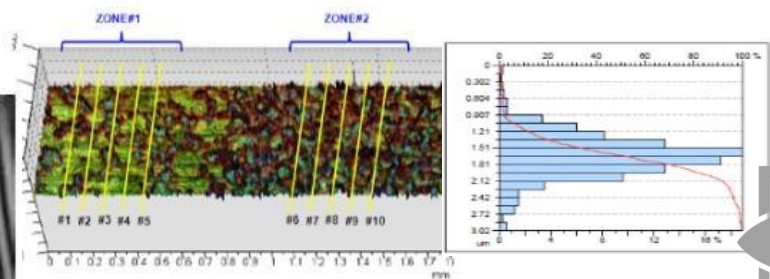
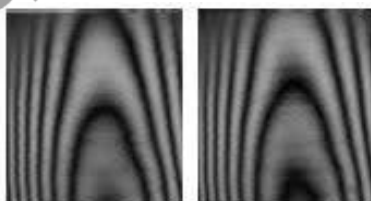
Earning potential assessment that a change in the stamping process can generate about surface defects on printed sheets.

Objective

The objective of this subproject is to analyze the feasibility of developing a defect identification system in sheet metal stamped by GMB.

Approach

It also included the objective qualify defects through algorithms of treatment and standard images. The identification of defects also involves comparing the real parts with the optimal model (CAD) and separating them into groups with different intensities.



Contact: +55 (12) 3947-6948

Praça Marechal-do-Ar Eduardo Gomes - Vila das Acacias
São José dos Campos - SP, 12228-900

Project Responsible: Prof. Dr. Anderson Borille